



Extended defects in semiconductors
Les Issambres 2016-09

Investigation of the structure of dislocation clusters in multicrystalline block-cast silicon

D. Oriwol, L. Sylla, A. N. Danilewsky, H. S. Leipner



© All rights reserved Solar World/CMAT MLU Halle 2016

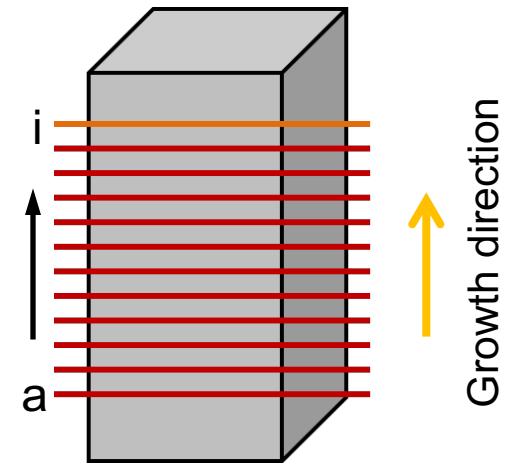
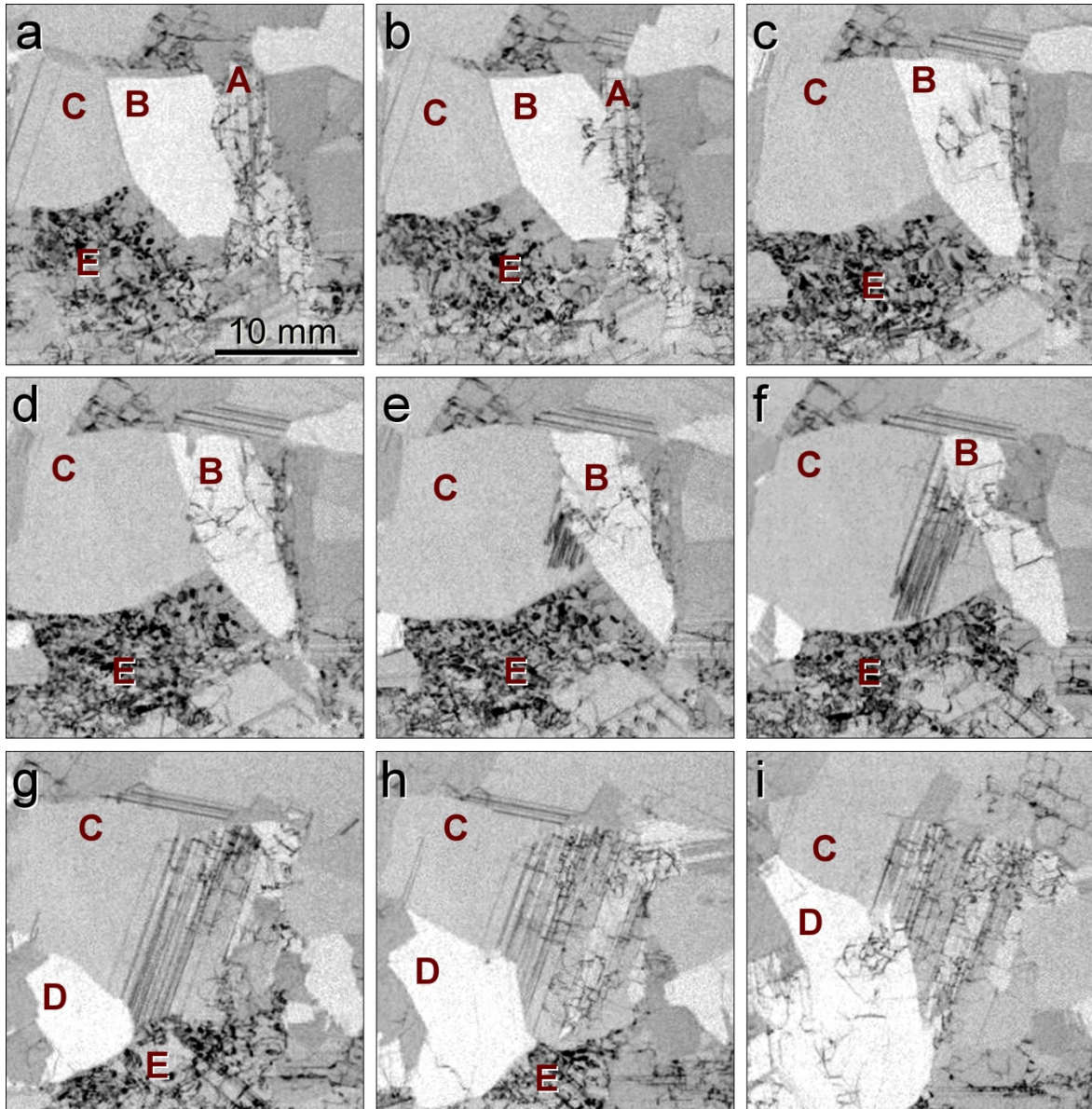


Martin-Luther-Universität
Halle-Wittenberg



Interdisziplinäres Zentrum
für Materialwissenschaften

Change of dislocation population in the block



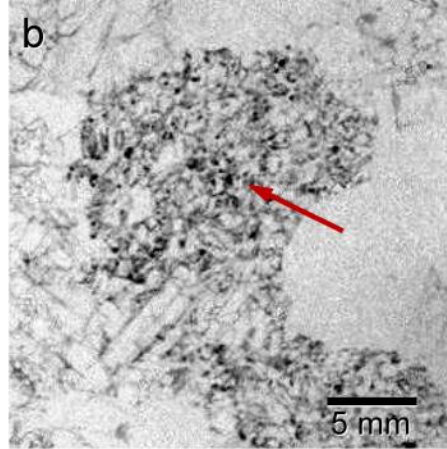
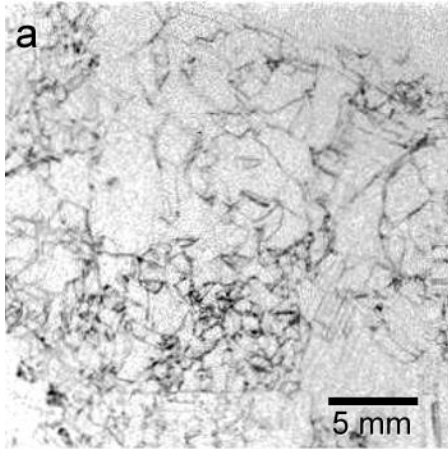
D. Oriwol *et al.* *Acta Mater.*
(2013) doi:
[10.1016/j.actamat.2013.08.002](https://doi.org/10.1016/j.actamat.2013.08.002)

Grain orientation effect

Light clusters

Dense clusters

Texture etch



Wright-Jenkins etch

